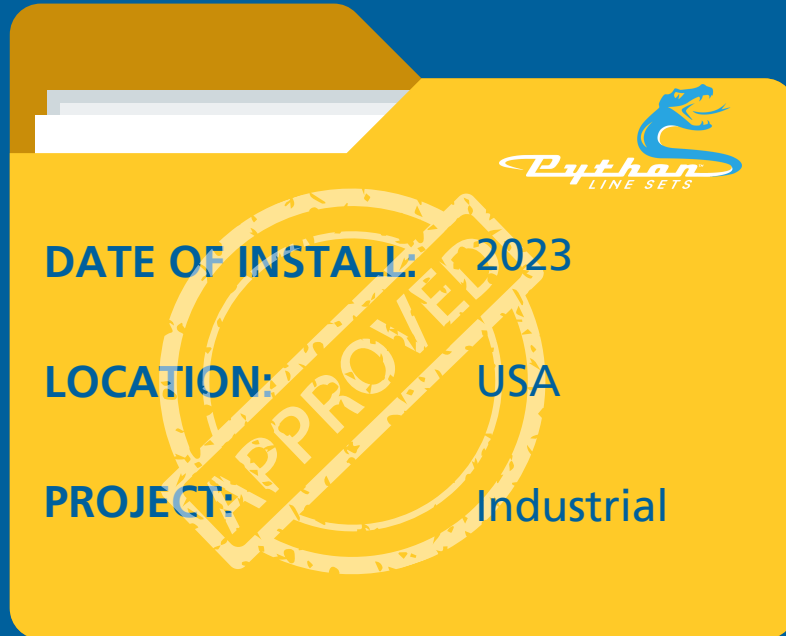
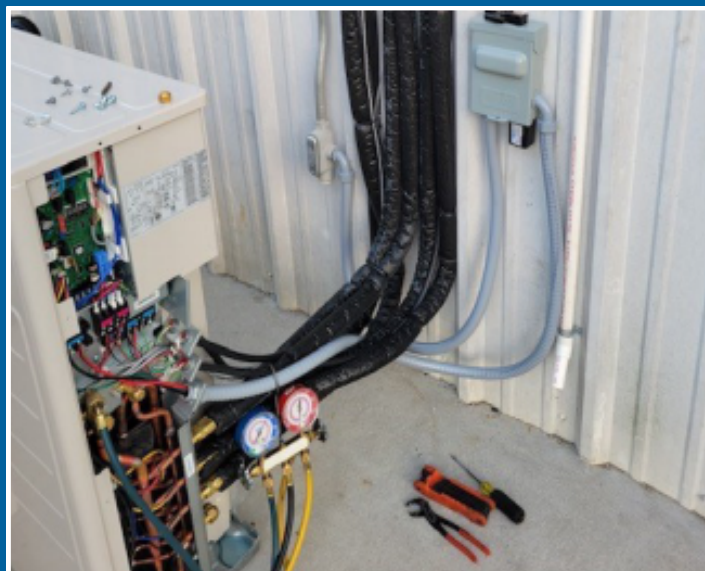


CASE STUDY #106



THE CHALLENGES

- Products used to maintain sanitation on the poultry farm were eroding the previously-installed copper line sets. Customer needed an alternative line set material that was chemical resistant.



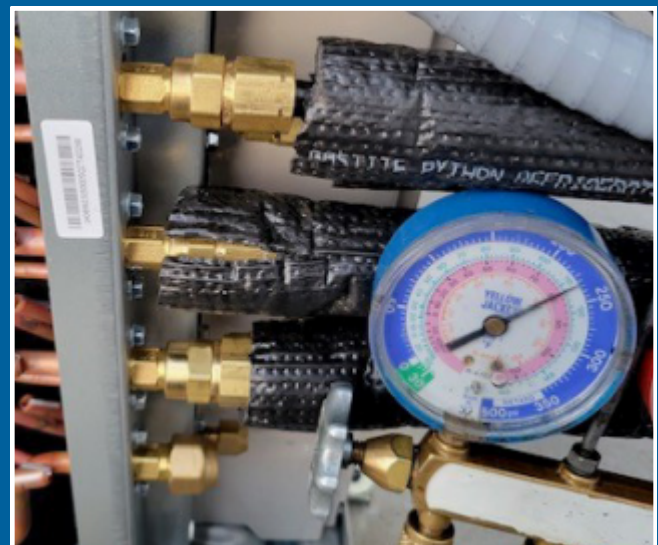
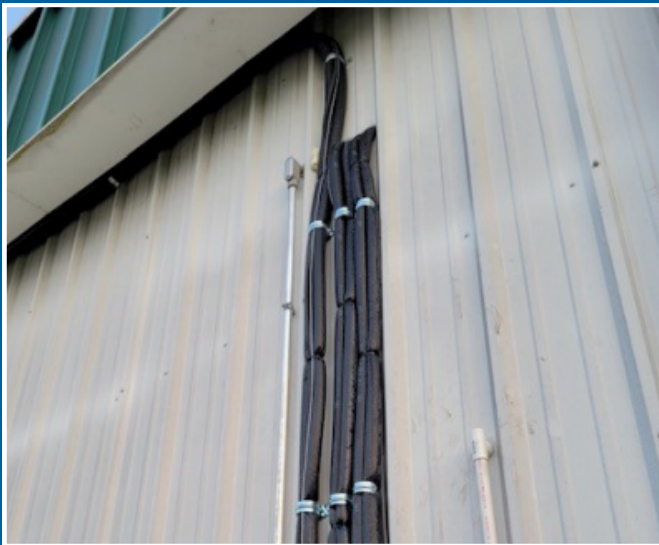
FLEXIBLE | LIGHTWEIGHT / KINK-RESISTANT

THE SOLUTIONS

- Python pert-AL-pert is chemical resistant and withstands exposure to a variety of products, including those commonly used in commercial farming applications.

THE BENEFITS

- Chemical resistant line for longevity
- Ease of installation
- Tear resilient insulation
- Lightweight and easy to bend



FLEXIBLE | LIGHTWEIGHT / KINK-RESISTANT

T: 01509 508939 | E: info@pythonls.com